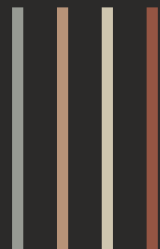


hertz
ARCHITECTURE • INTERIORS • LANDSCAPE



ATTENTION TO DETAIL



CUSTOMER CENTRICITY



INNOVATION



hertz
ARCHITECTURE • INTERIORS • LANDSCAPE

COLLABORATION



RELIABILITY



The HeRTZ

Hertz Architects began as a union of frequencies, a shared dream among four friends, Harshal, Ronak, Tushar and Zain in 2009, and was brought to life as an innovative design studio in 2017. What sets us apart is our belief that great architecture starts with understanding people.



Harshal Patel

The Mastermind

A master strategist and core designer, he's the perfect fusion of vision and precision. With every project, he crafts brilliance, ensuring that even the smallest detail is nothing short of flawless.

Ronak Kambodia

The Optimist

As a founding pillar of the team, Ronak is the brain behind the business strategies, effortlessly blending market trends with design savvy through his sharp insights and resourcefulness.

Tushar Mhaiskar

The Multitasker

Tushar, the ultimate multitasker, effortlessly juggles diverse challenges with precision and flair. Whether it's work or life, his pursuit of perfection leaves no stone unturned and no detail overlooked.

Zain Nizami

The Executionist

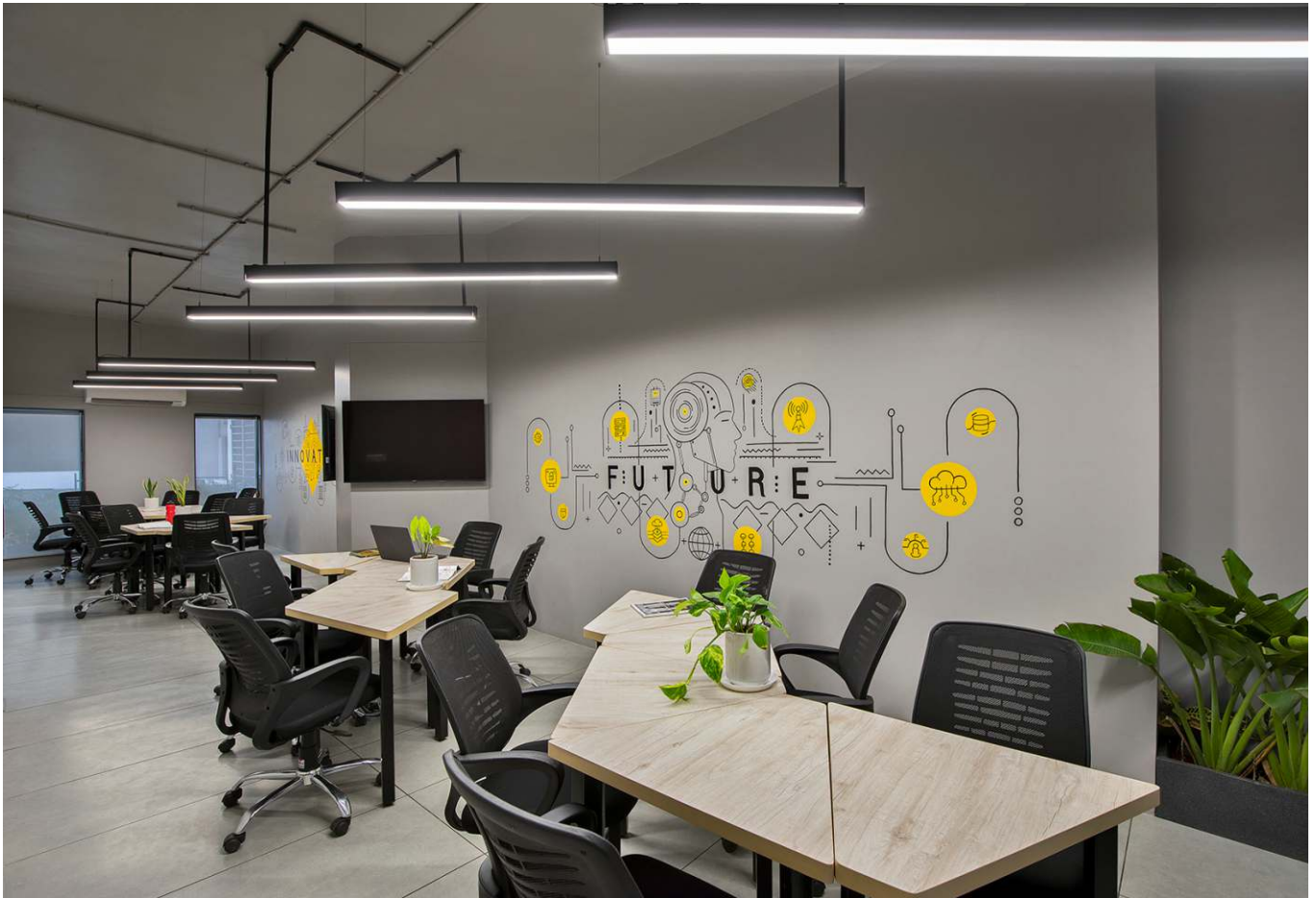
Zain, the taskmaster extraordinaire, turns challenges into achievements with his swift, spontaneous approach. A pro at every stage of design, he's the go-to guy who gets things done, proudly owning the title 'Jack of All Trades.'



Hertz Architects | ©MKG

Prakash Software

Type : Office
Area : 10000 sq.ft.
Location : Vadodara

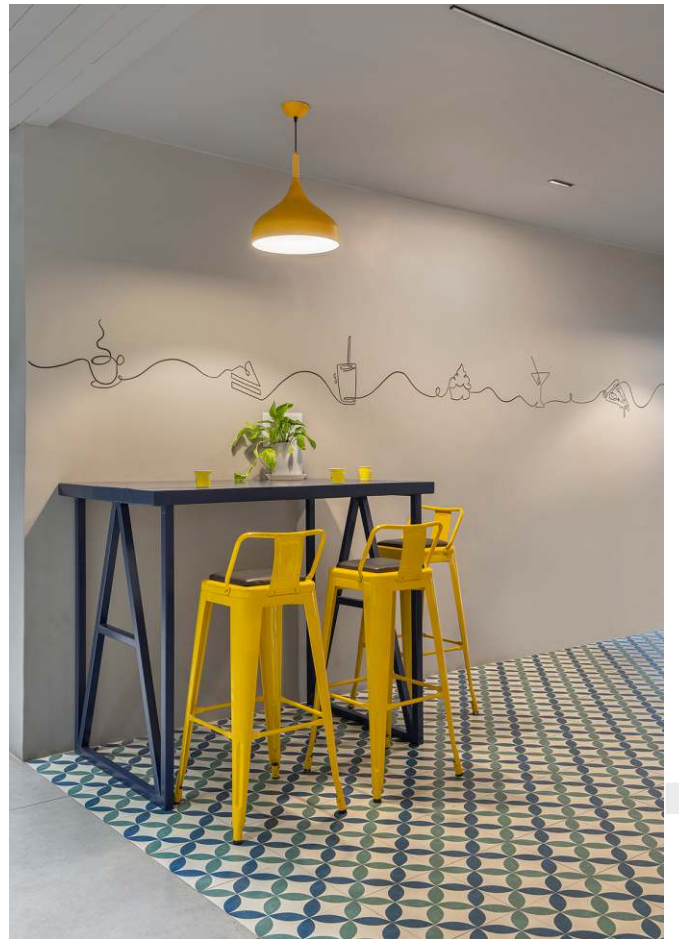


This isn't your typical coding office, it's a space that sparks creativity and energy. Bright accents bring a playful edge, while a fresh, youthful design keeps the atmosphere dynamic. The client wanted an office that felt as innovative as the ideas brewing inside it, so every corner is designed

to inspire. From bold colours to thoughtfully designed breakout zones, it's a workspace that balances focus with fun. A place where code comes to life, and collaboration feels as effortless as conversation.







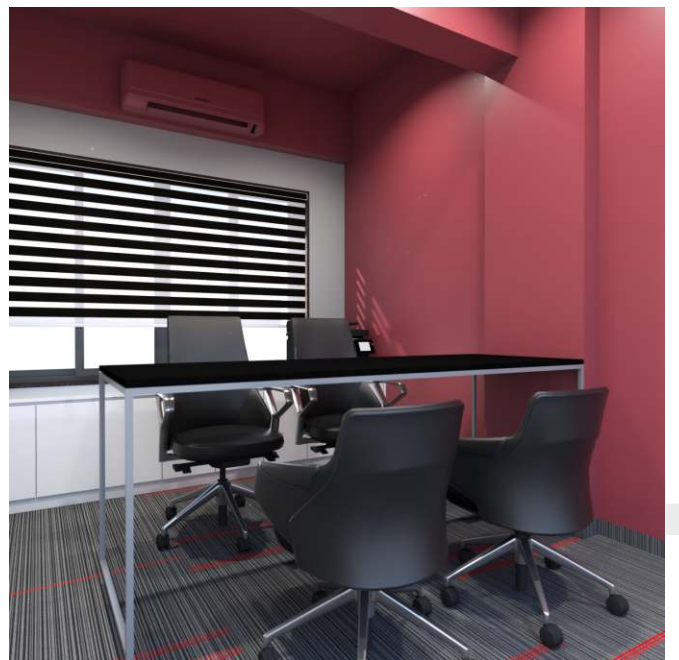
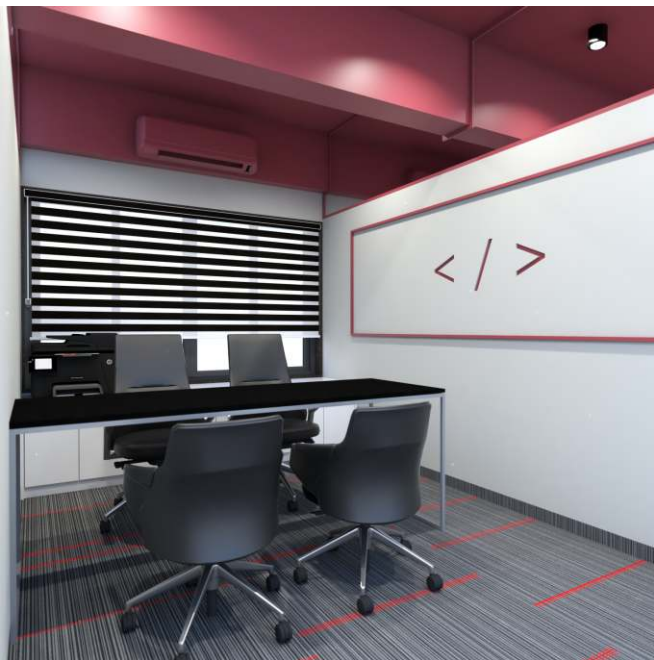
Orion Coders

Type : Office
Area : 6000 sq.ft.
Location : Vadodara



A coding workspace that's anything but ordinary, that's what the client envisioned. Bold red and blue walls set the tone, bringing energy and focus to the space. Metal and wood-based furniture strike the perfect balance between industrial and warm, while dedicated desks and meeting rooms ensure seamless collaboration. A plush waiting area

with cozy sofas invites comfort, and soft carpeted flooring ties it all together. Designed for both deep work and dynamic discussions, this office is where ideas flow as effortlessly as code.





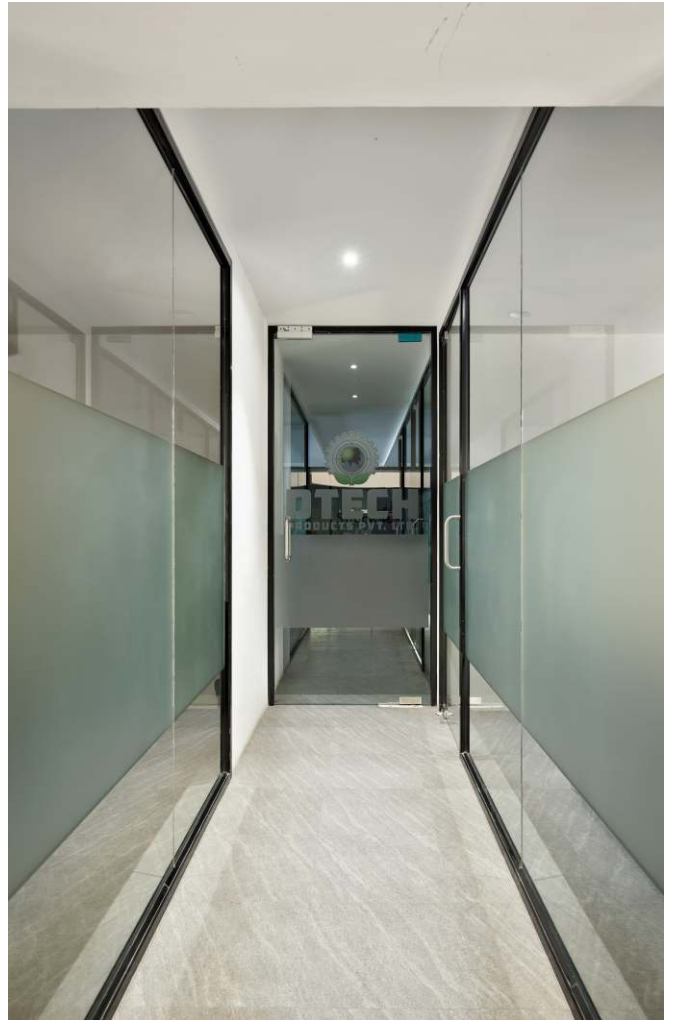
D-Tech Office

Type : Office
Area : 6000 sq.ft.
Location : Vadodara



Industrial edge meets modern efficiency at D Tech Office. Glass cabins create openness without losing privacy, while the bright, airy interiors keep the energy high and the focus sharp. An open layout encourages collaboration, while every detail - smart work zones, sleek finishes, and top-notch utilities - ensures a seamless workflow. We designed

a workspace for professionals who thrive in a space that's as dynamic as their ideas, it's more than just an office. It's a space built for clarity, creativity, and getting things done in style.





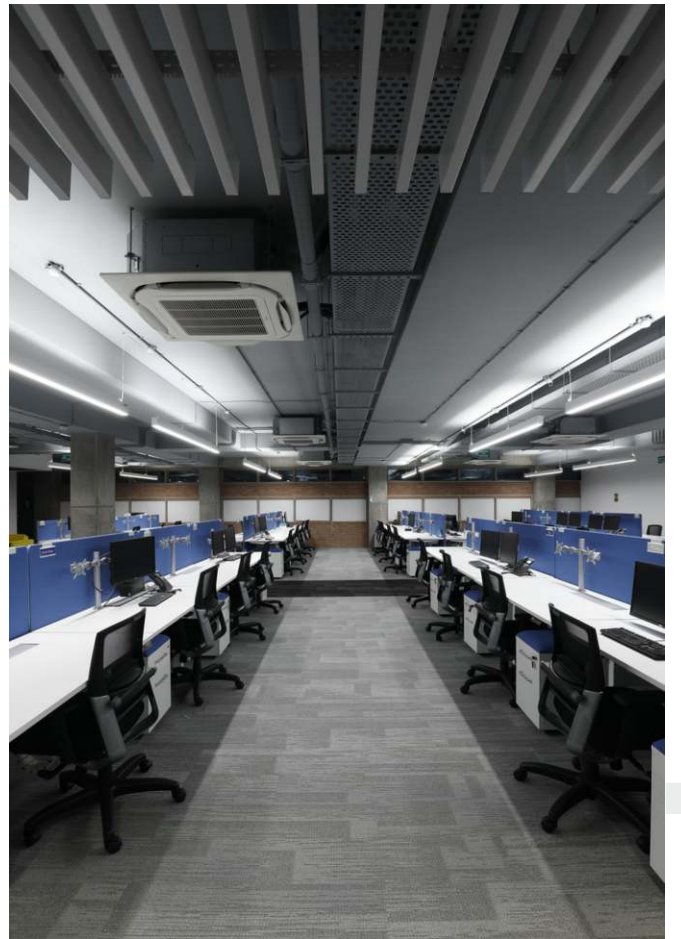
Xylem Water Solutions

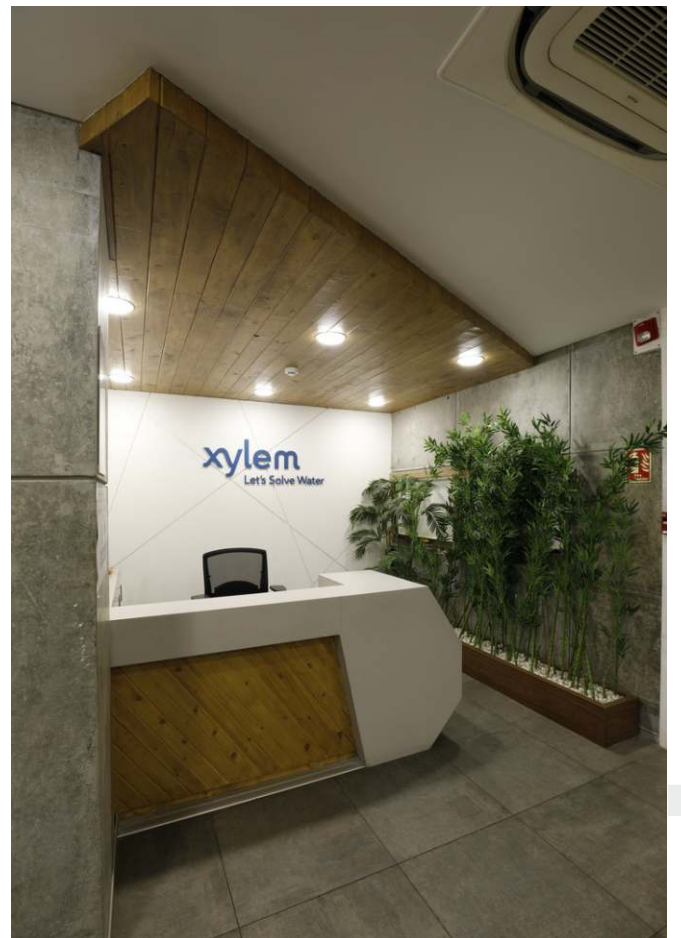
Type : Office
Area : 5000 sq.ft.
Location : Vadodara

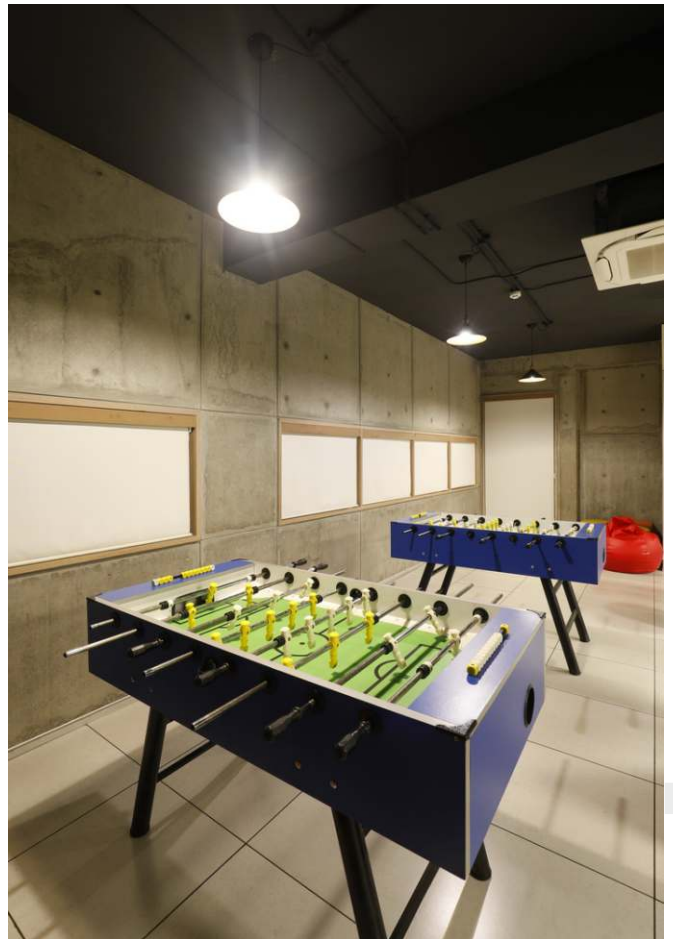
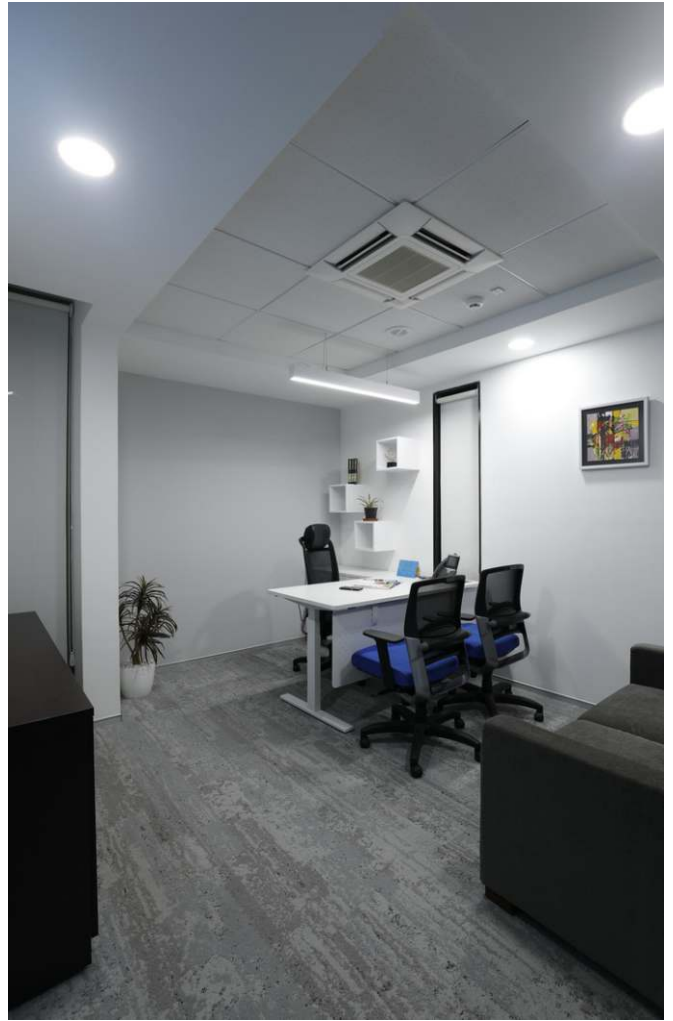


For Xylem Watersolutions' office, the goal was to create a clean, minimal space that echoed the company's logo colours. We kept it simple with modular furniture, tailored to the specific needs of the workstations. The meeting rooms, conference room, and director's cabin are housed in sleek glass cubicles, topped with grid ceilings that add a

modern touch. The employee workspace features exposed electrical layouts for a raw, industrial feel, with hanging rectangular lights focused directly on the desks. Since the building itself was architecturally sound, we left the walls untouched, letting the design focus on the interiors.









Arena Animation

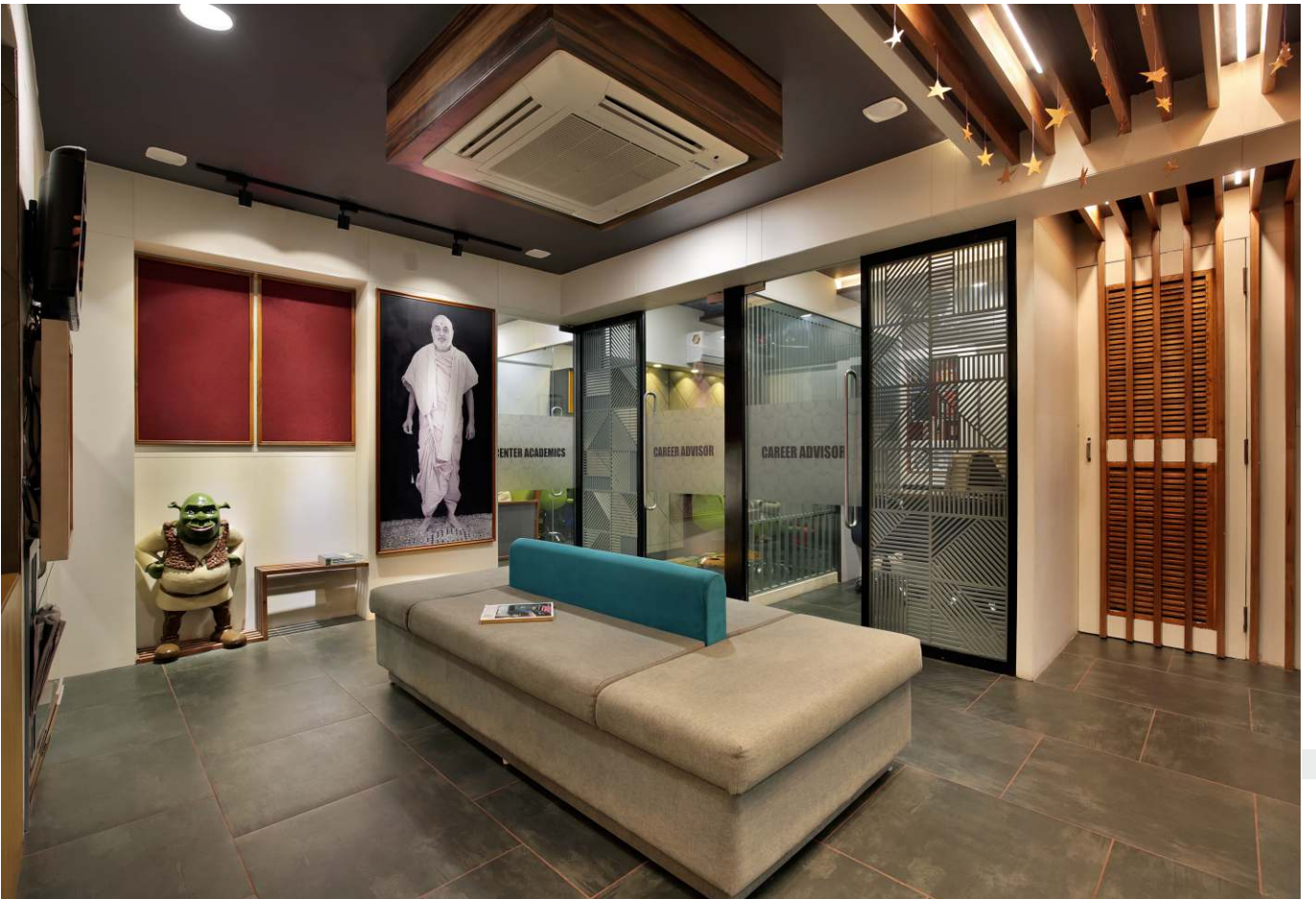
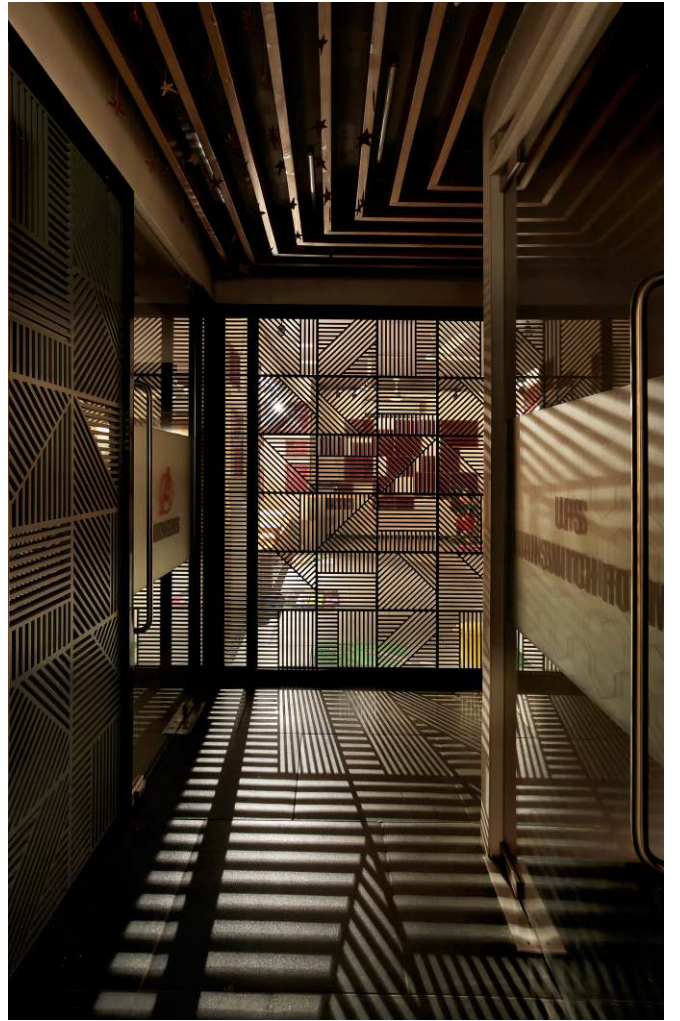
Type : Office
Area : 4500 sq.ft.
Location : Vadodara

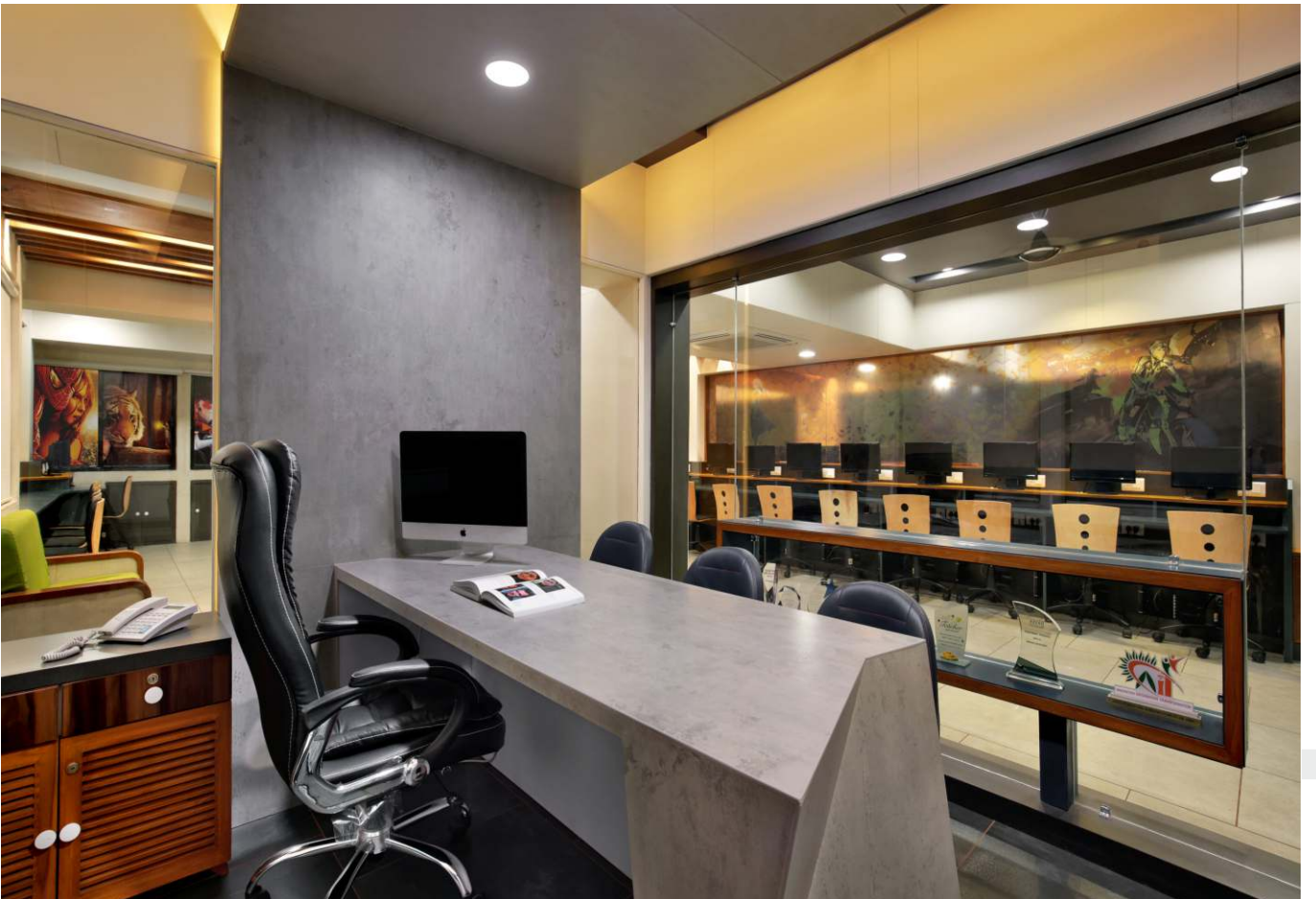


This Arena Multimedia branch is designed for creativity to thrive. With a clean, modern aesthetic, it balances smart minimalism with warm wood accents, making the space feel both inspiring and inviting. Light tones keep it open and airy, while every element is placed with purpose, to

maximize space, enhance focus, and create a seamless learning experience. The brief was simple: a space that feels fresh, functional, and energizing for students. The result? A setting where ideas flow, skills sharpen, and learning feels effortless.







Nishikant's Office

Type : Office
Area : 1600 sq.ft.
Location : Vadodara



Every detail in this office is a blend of elegance and function. Honeycomb wooden walls add depth, arched wood and green accents soften the space, and a mix of terrazzo and wood flooring creates a rich, textured contrast. The client wanted a workspace that felt refined

yet inviting, modern minimalism with a personality. Classy furniture completes the look, ensuring comfort without compromise. Designed for both focus and inspiration, this office is a statement in sophistication.



Air System

Type : Office
Area : 1000 sq.ft.
Location : Vadodara



This office is all about smart, effortless design, where clean lines, light tones, and open spaces create an environment that feels as good as it looks. Every detail is intentional, from the airy layout that maximizes flow to the soft, neutral palette that keeps the space bright and uplifting.

It's minimal without feeling cold, modern without trying too hard. The result is a workspace that energizes, inspires, and makes long hours feel a little lighter. Because when a space works beautifully, so does everyone in it.

BVK Projects

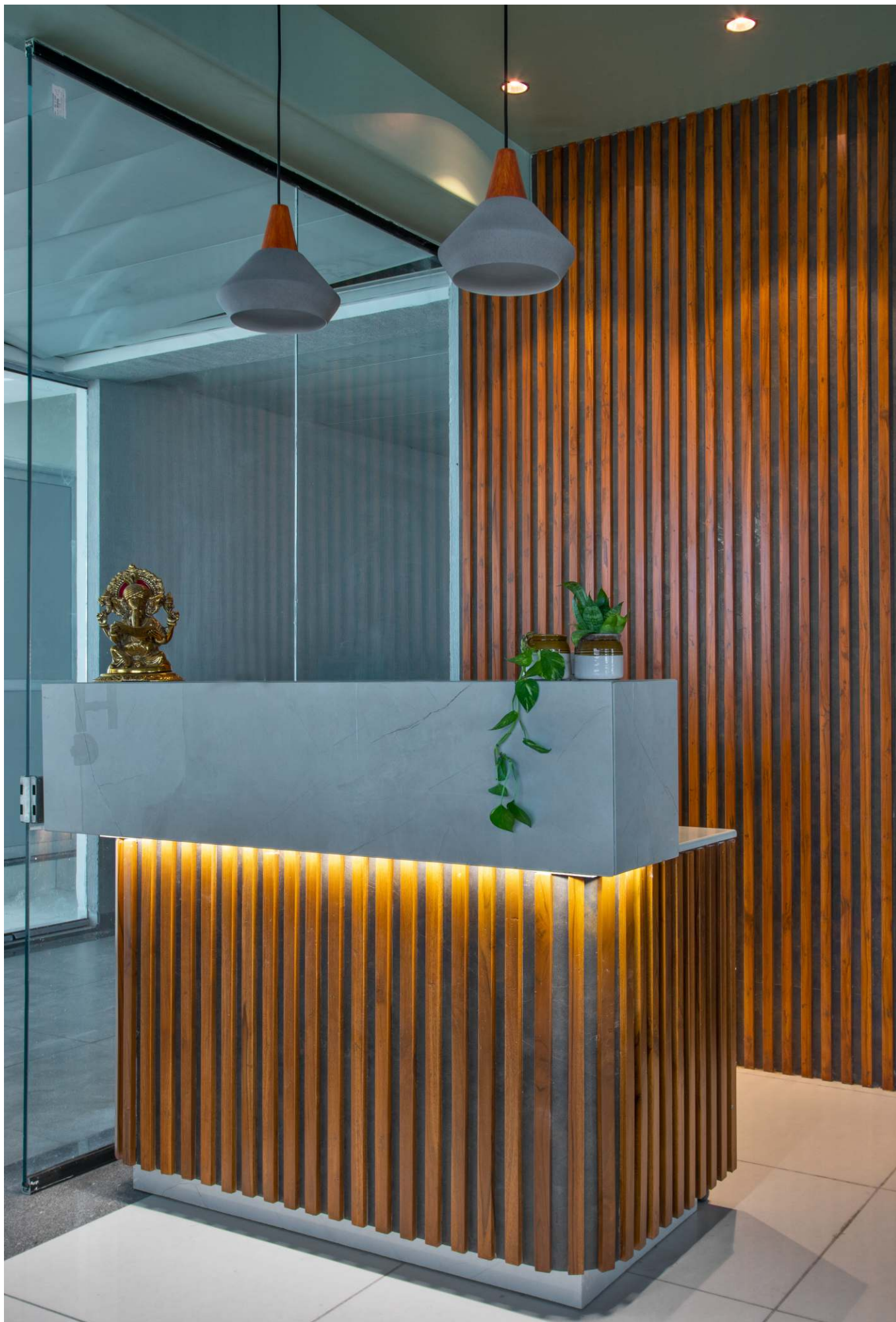
Type : Office
Area : 900 sq.ft.
Location : Vadodara



This contemporary office premise was designed with one key focus: creating a space that fosters productivity while radiating professionalism. The design plays with sleek, modern textures and clean, open spaces to offer a refreshing yet highly functional environment. We opted for minimalism, letting the materials speak for

themselves—from smooth, polished surfaces to refined, subtle finishes. Every corner was carefully planned to avoid clutter, ensuring that the workspace remains not just efficient but also inspiring.





Overseas Consultancy

Type : Office
Area : 700 sq.ft.
Location : Vadodara



This visa consultancy office space is where sleek design meets sharp professionalism. The layout combines clean lines and open spaces to create an environment that is as modern as it is functional. A sophisticated material palette of neutral tones, glass partitions, and subtle accents reflects the brand's global aspirations. The reception area

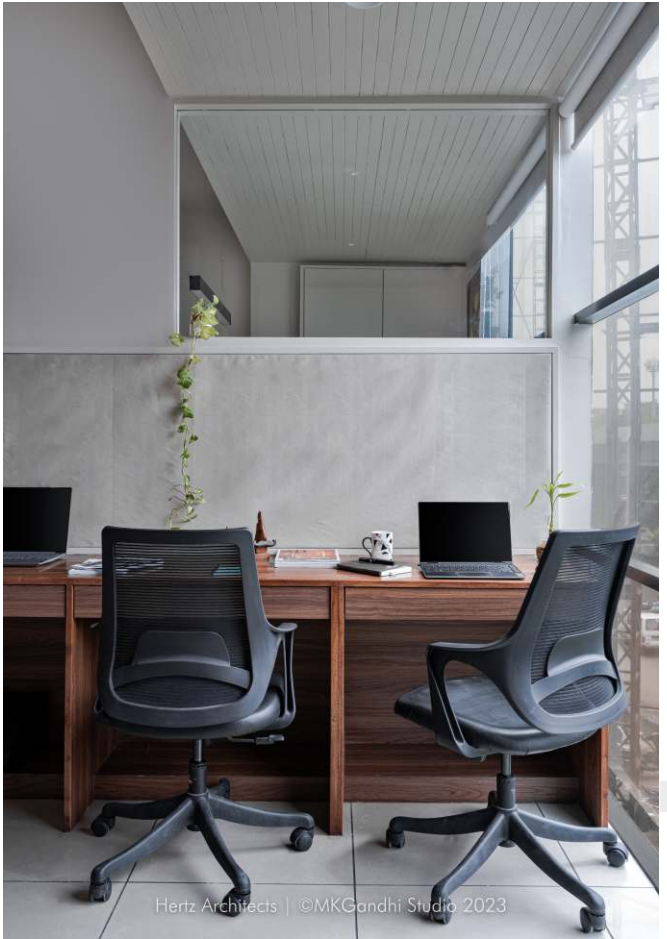
welcomes clients with a polished first impression, while workspaces are designed for seamless collaboration and productivity. Every corner of this office exudes professionalism, with a dash of contemporary flair, setting the perfect tone for embarking on global journeys.



Hertz Architects | ©MKGandhi Studio 2023



Hertz Architects | ©MKGandhi Studio 2023



Hertz Architects | ©MKGandhi Studio 2023



Hertz Architects | ©MKGandhi Studio 2023

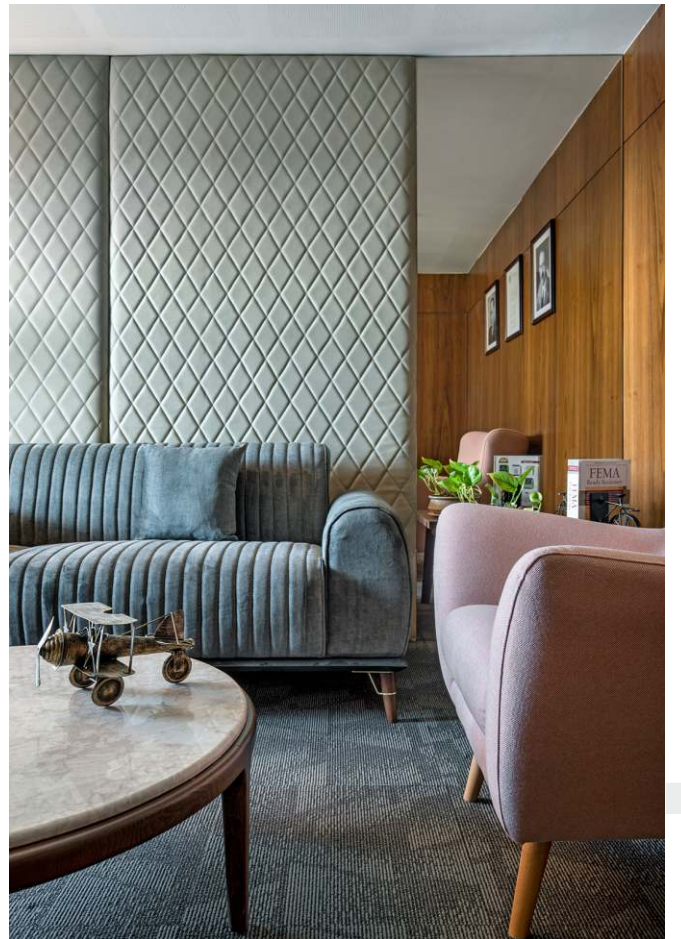
Mr. Hemal Modi office

Type : Office
Area : 600 sq.ft.
Location : Vadodara



A workspace should be more than just four walls, it should reflect the people within. With this in mind, the client sought a balance between elegance and ease. Wooden walls bring depth, eclectic flooring adds a hint of playfulness, and pastel furniture keeps things fresh and airy. The design is minimal yet warm, structured yet

inviting. Every inch is crafted to encourage both focus and creativity, proving that productivity and comfort can absolutely go hand in hand.



Vyom's Office

Type : Office
Area : 400 sq.ft.
Location : Vadodara



Clean, compact, and effortlessly classy, this office makes the most of every inch. Soft colours create a soothing backdrop, while smart layouts ensure seamless functionality. The client wanted a space that felt refined yet

highly efficient, so dedicated workstations and carefully curated essentials bring both style and substance. Every detail is designed for focus and comfort, proving that great design isn't about size, it's about intention.



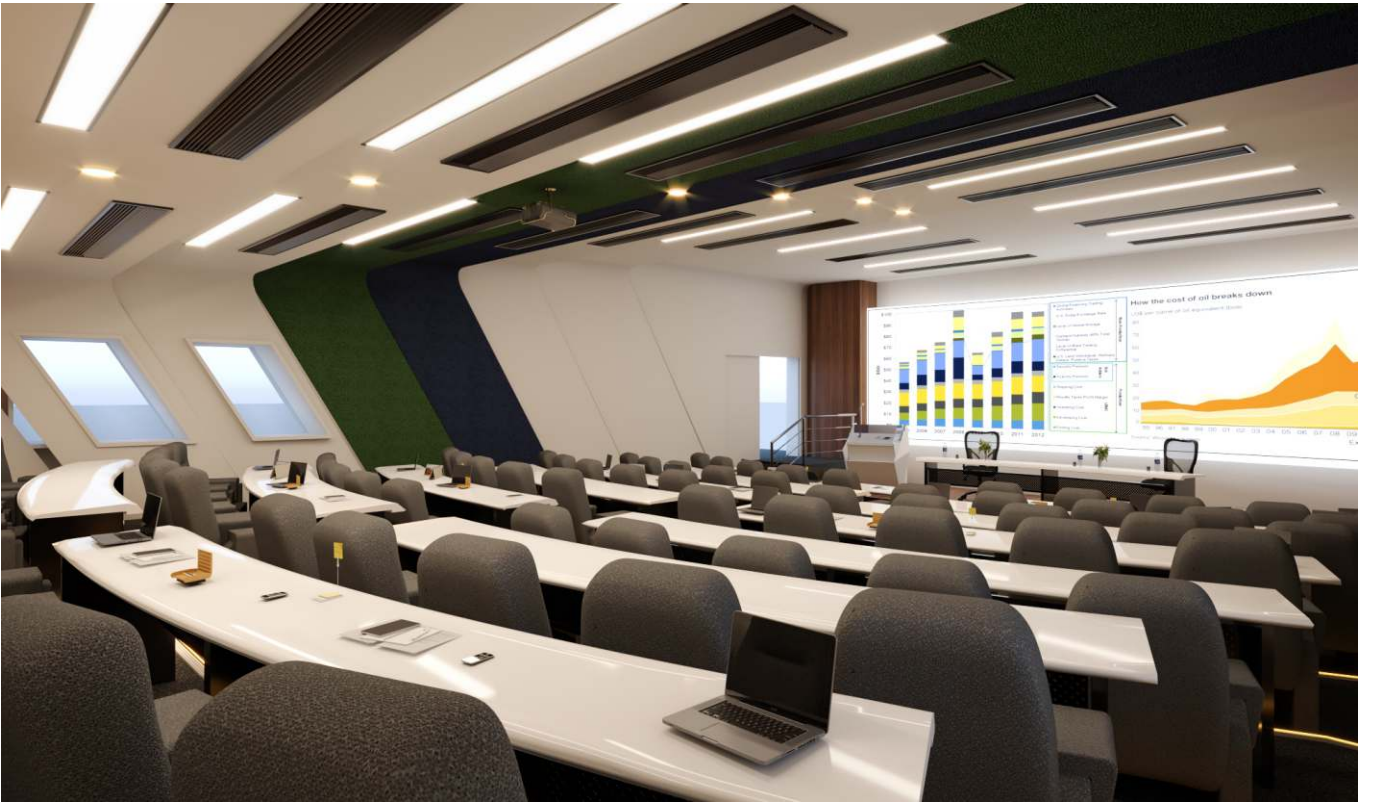
Ineos Solutions

Type : Office
Area : 12000 sq.ft.
Location : Halol



This hall is designed for learning that flows effortlessly. With tiered, theatre-style seating and curved tables, the audience gets a clear view and a comfortable workspace. Bright, well-lit interiors keep the space fresh and focused, creating an environment where ideas take centre stage. Smartly planned with all the essentials like projectors and white screen in place, it's built for engagement,

collaboration, and seamless instruction. Whether it's a lecture, workshop, or discussion, this space ensures every seat feels like the best one in the house.



Amit Gandhi Showroom

Type : Commercial
Area : 750 sq.ft.
Location : Vadodara



This showroom is where style meets purpose, designed to be as inspiring as the interiors it showcases. Light tones and a smart, open layout make the space feel airy and inviting, ensuring every piece on display gets the attention it deserves. The brief was clear: create a space that

maximizes flow, facilitates seamless client interactions, and enhances product visibility. Minimal yet warm, it achieves just that, blending function with aesthetics effortlessly. We ensured a space that showcases great design should be a reflection of it too.



Asian Paints

Type : Commercial
Area : 5000 sq.ft.
Location : Vadodara



This Asian Paints showroom is designed to be more than just a display, it's an experience. Thoughtfully crafted corners bring colours, textures, and finishes to life in realistic mock settings, helping customers visualize their perfect space. The modern, smart layout ensures every

shade and surface gets its moment, making selection effortless and inspiring. It's not just about seeing paint; it's about feeling the possibilities. A space where creativity flows, choices become clear, and every wall tells a story waiting to be painted.





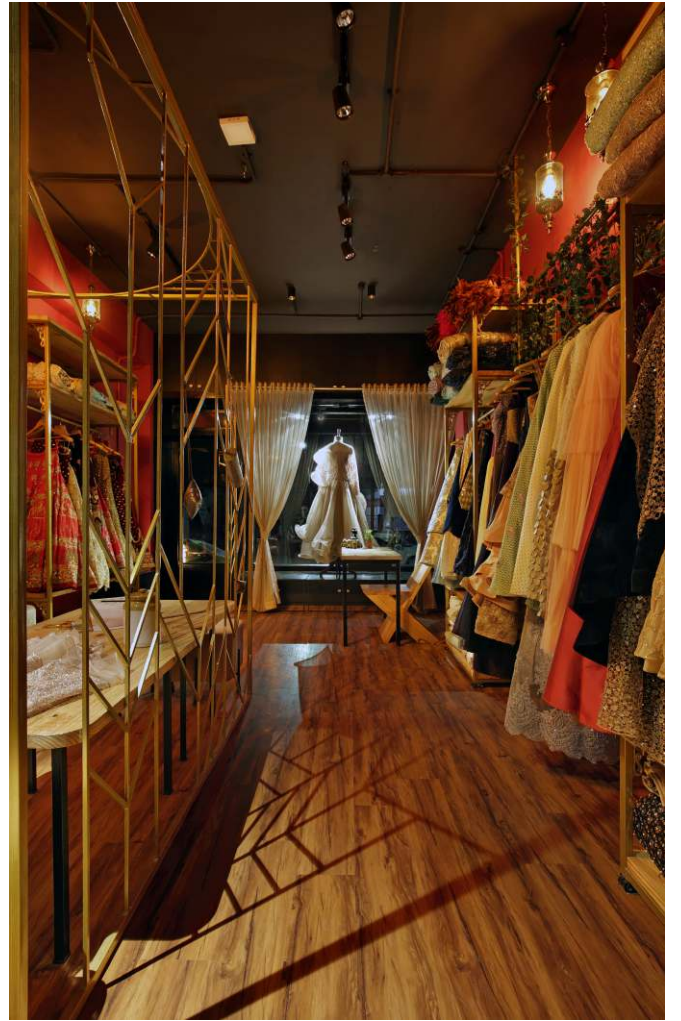
Bridez and Groomz

Type : Commercial
Area : 600 sq.ft.
Location : Vadodara



This boutique, one of our early projects, embraces bold design with a rich colour palette of red, black, and gold, reflecting the client's style. We created a sense of fullness and luxury in the compact space, using carefully planned layouts that allow for smooth movement. The red walls

and black ceiling blend seamlessly, while vintage frames and artwork from the client's collection add an extra touch of elegance. This space perfectly balances richness and functionality, creating a memorable shopping experience.



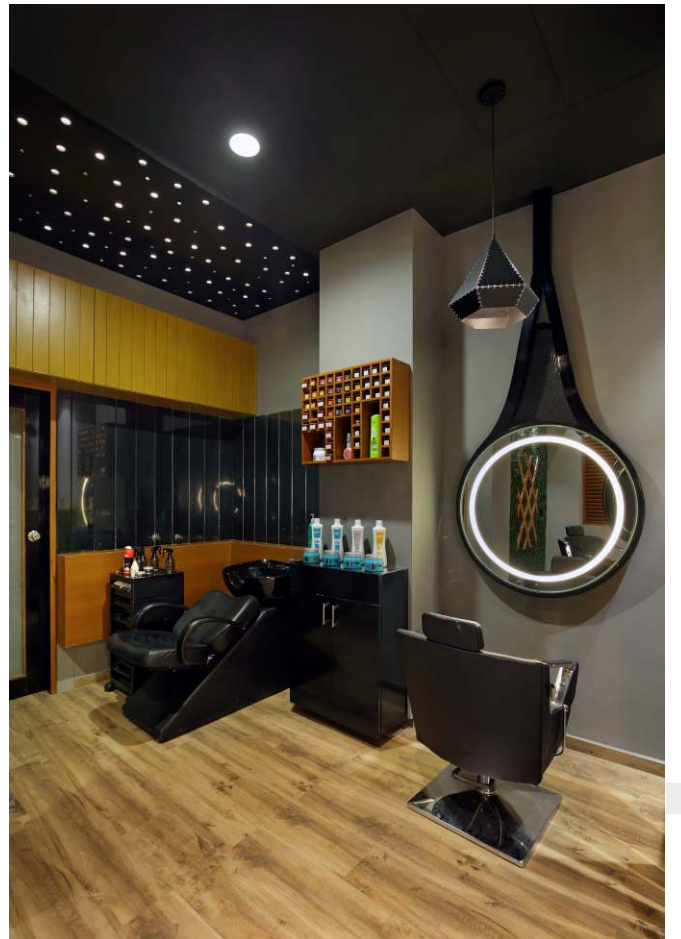
Mr. Cutz Salon,

Type : Commercial
Area : 900 sq.ft.
Location : Vadodara

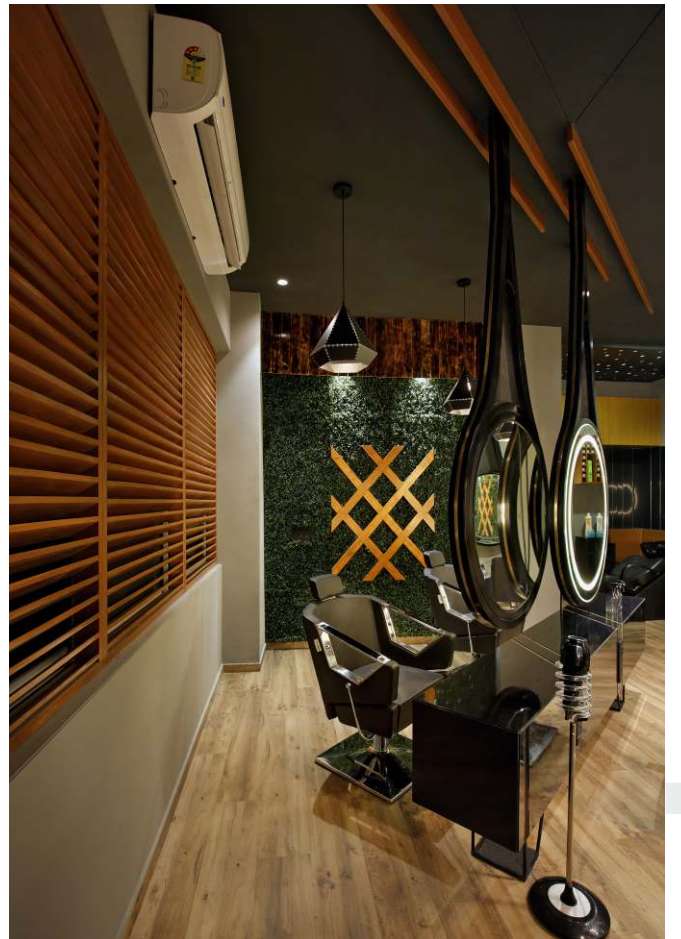


When the clients envisioned a salon that didn't feel like a traditional one, we took the challenge to design a space with freedom of movement. The layout breaks away from the usual, chairs and tables are placed diagonally, giving the space a more open and dynamic feel, with no walls closing in. To add a unique touch, we hung back-lit mirrors

from the ceiling, suspended above each table. The light wood flooring contrasts with the black ceiling, blending beautifully with the overall theme. A striking free-form light element, with a tucked-in seating bench, serves as the focal point, drawing attention from the outside and making the salon stand out.







Spice Garden Restaurant

Type : F&B
Area : 25000 sq.ft.
Location : Kamrej



The client wanted a space that felt like a retreat, raw, earthy, and deeply connected to nature. The result? A serene escape where mud walls and a thatched roof exude warmth, while natural stone flooring and gravelled pathways invite slow, mindful strolls. Soft, golden lighting

enhances the rustic charm, and lush tropical greens breathe life into every corner. It's a place where time slows down, the air feels fresher, and every detail whispers tranquility. Step in, unwind, and let nature do the rest.



Cleo's Cafe

Type : F&B
Area : 5000 sq.ft.
Location : Vadodara



Hertz Architects | ©MKGandhi Studio 2024

Cleo's café was conceptualized as a tropical escape where every corner is a postcard and every sip feels like a mini vacation. Designed with breezy open layouts, lush tropical vibes, and a dash of island magic, this café is your daily escape. Think vibrant pops of colour, walls alive with

playful art that's part gallery, part graffiti, and plants so happy they might start a conga line. Whether you're here for coffee, conversation, or just to soak in the quirky charm, we promise it's a getaway for your senses and your soul.

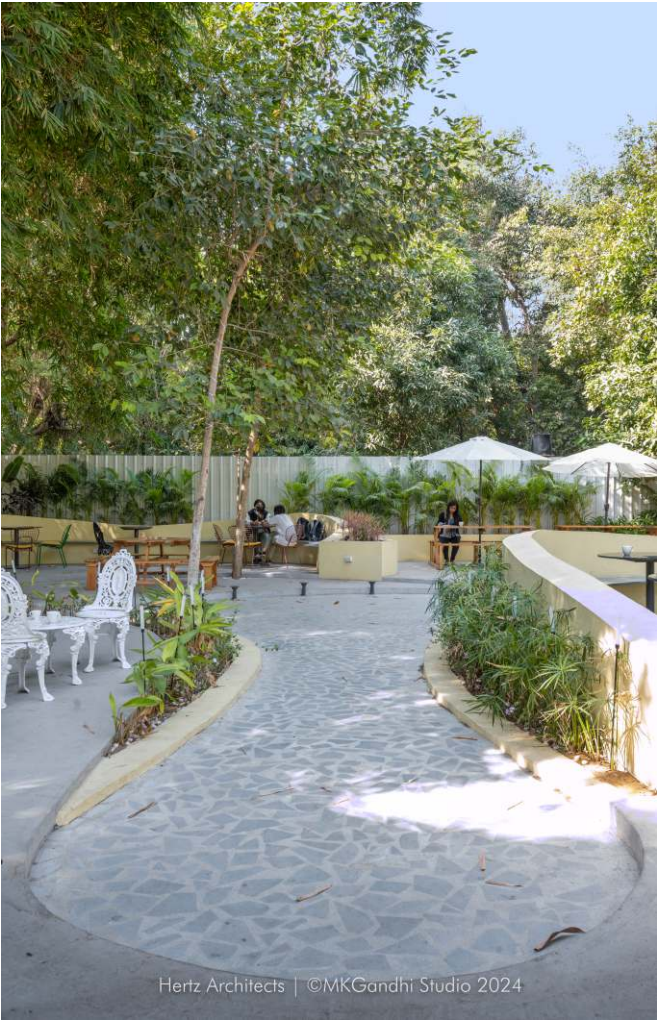


Hertz Architects | ©MKGandhi Studio 2024



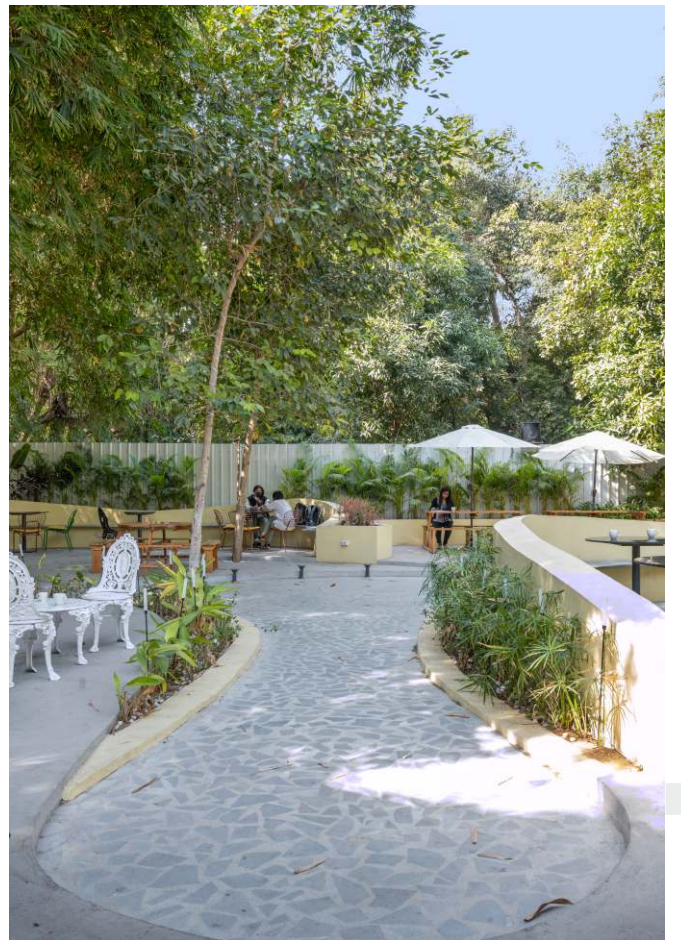
Hertz Architects | ©MKGandhi Studio 2024







Hertz Architects | ©MKGandhi Studio 2024



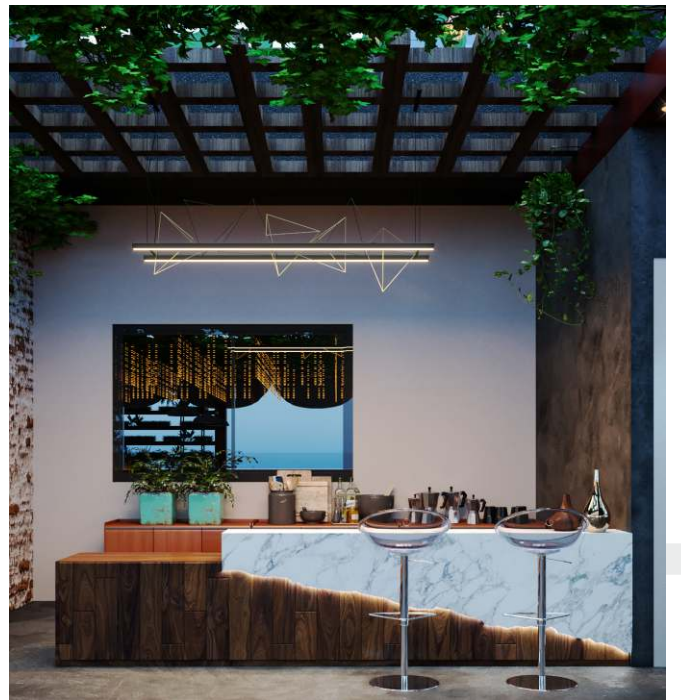
La Favela

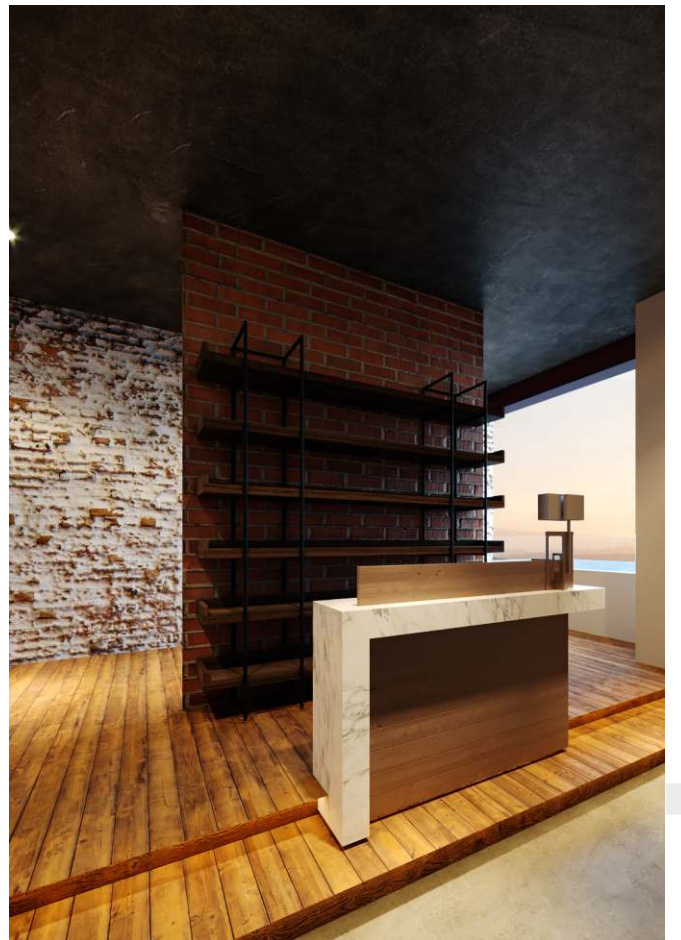
Type : F&B
Area : 5000 sq.ft.
Location : Udaipur



La Favela is where Udaipur's charm meets a festive, cozy vibe. The brief was clear, create a dining space that feels both vibrant and intimate, perfect for every kind of gathering. Whether you're soaking in the open skies from the terrace gazebos or settling into the warm indoors,

every corner is designed for comfort and conversation. Twinkling fairy lights set the mood, while lush greenery wraps the space in a relaxed embrace. At La Favela, every meal feels like a little getaway.





Status Restaurant

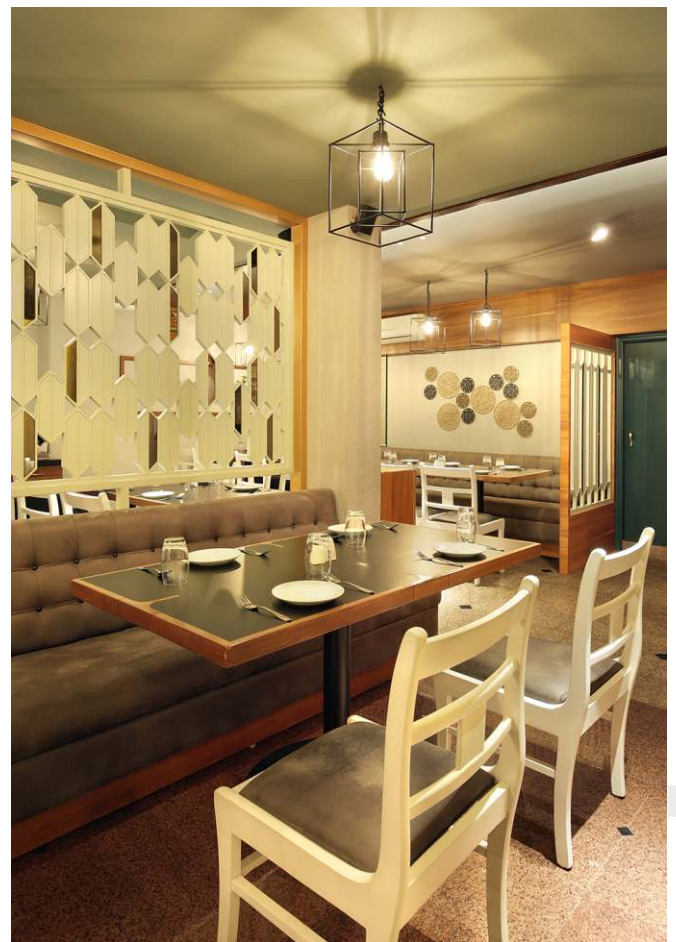
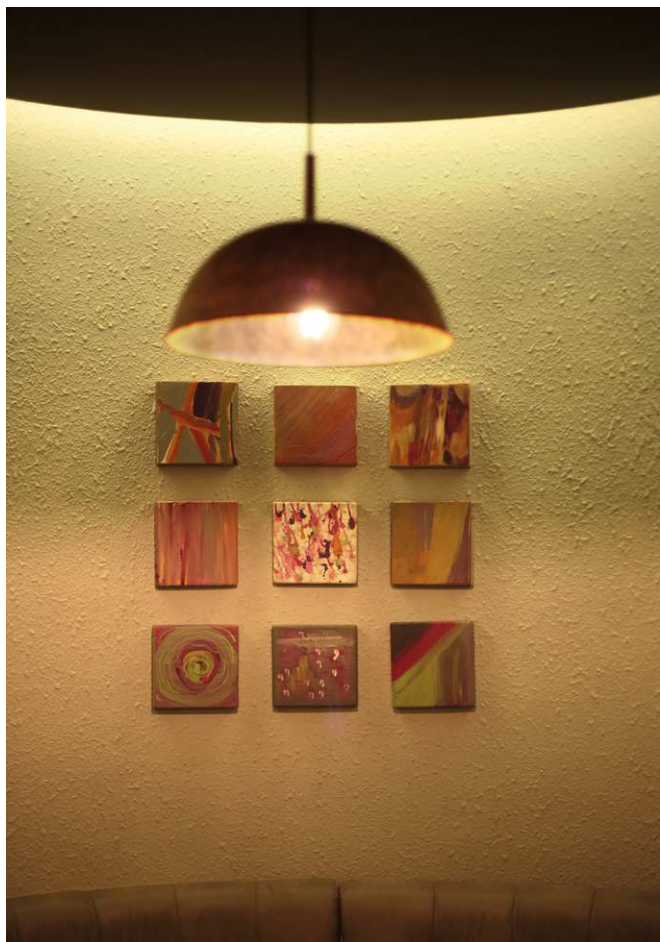
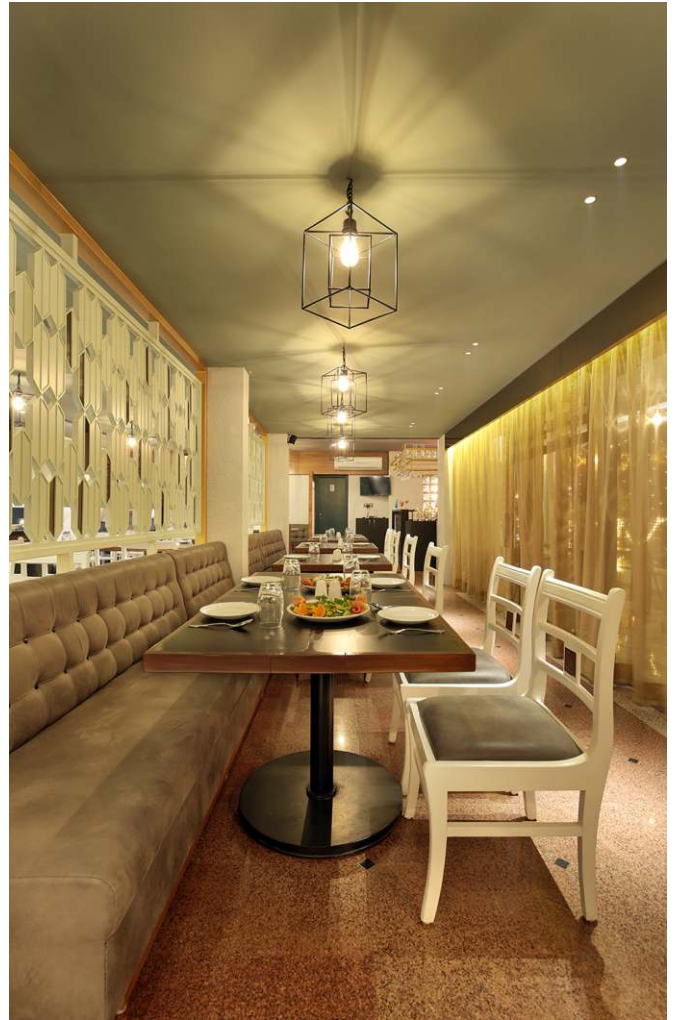
Type : F&B
Area : 3000 sq.ft.
Location : Vadodara



For this renovation, the client wanted a soothing, simple interior that preserved the restaurant's legacy while offering a fresh look. We revamped the entrance foyer with textured walls and mirrored patterns to create a grand entrance. The dining area was divided by metal and

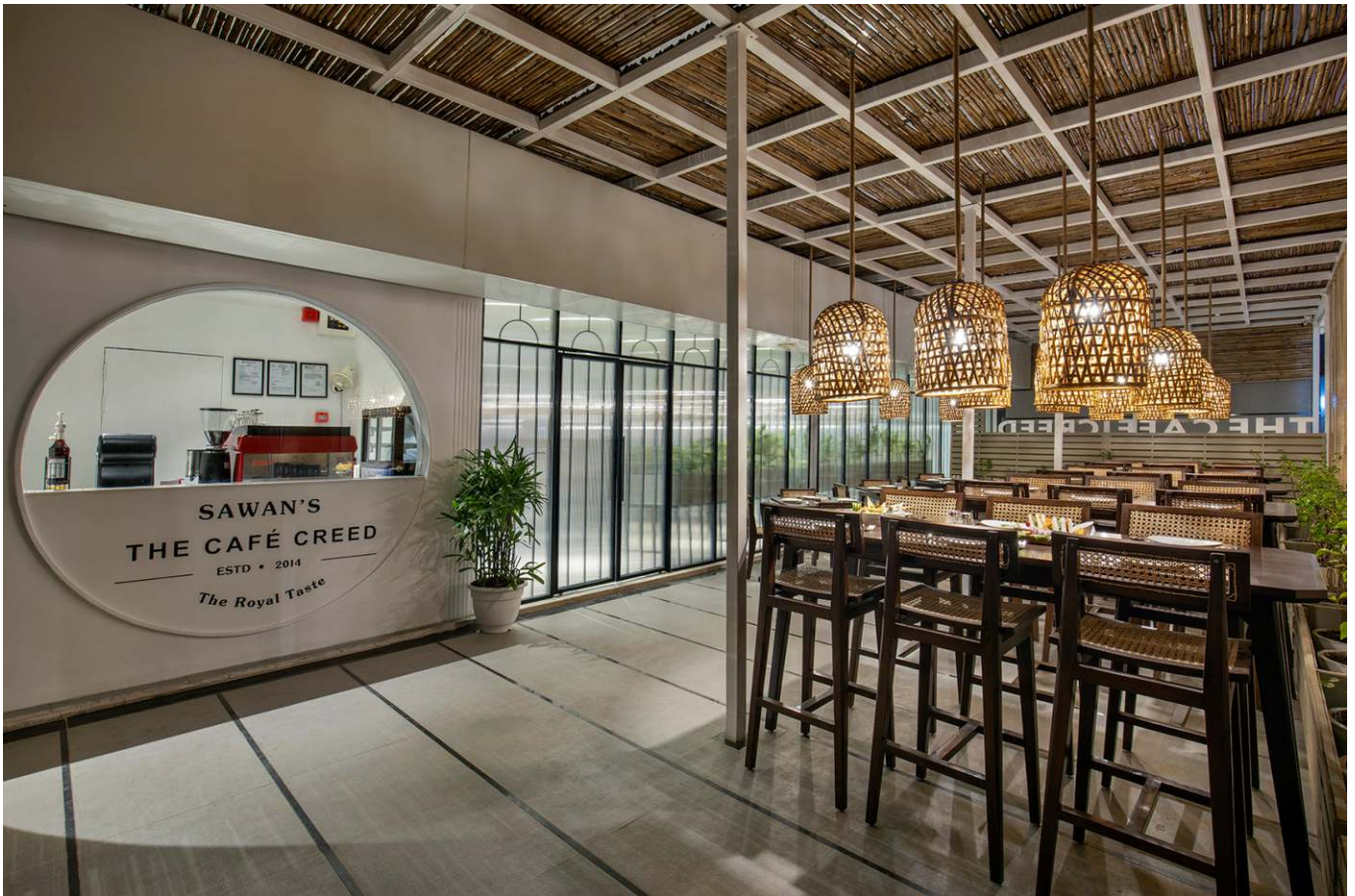
wooden-framed partitions, maintaining an open feel. The original tables and chairs stayed, with bench seating added for an updated touch. Minimal artwork and clean lines kept the space calm and timeless.





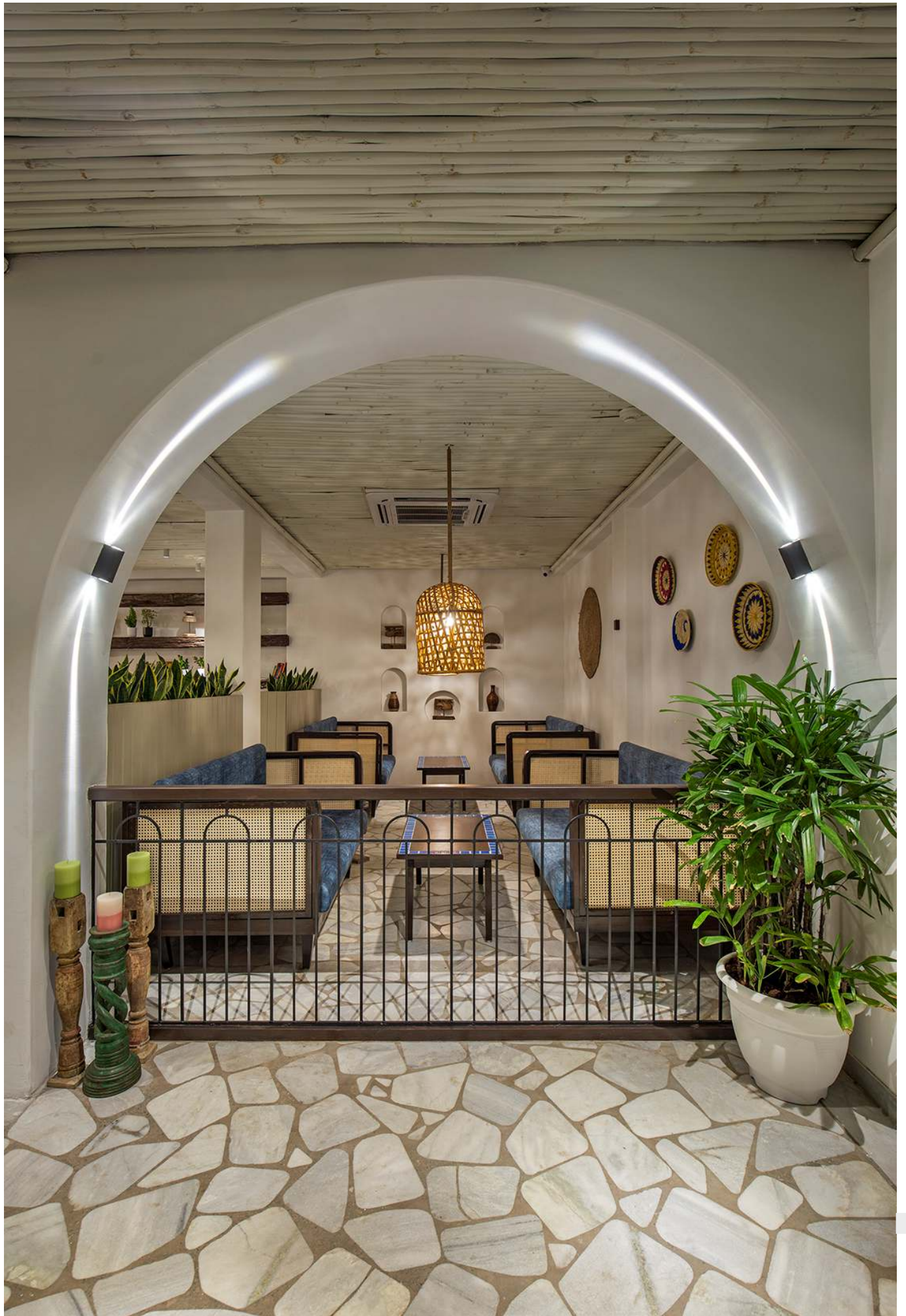
Café Creed

Type : F&B
Area : 2000 sq.ft.
Location : Vadodara

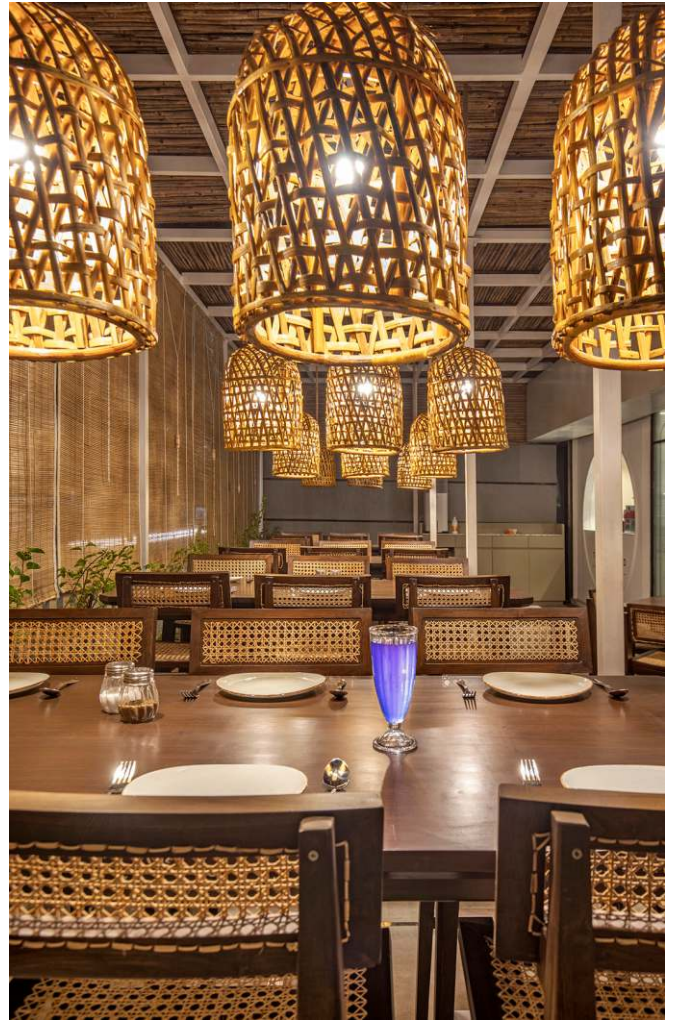


Designing a hospitality space is more than just creating a beautiful environment – it's about crafting an experience. For Café Creed, our goal was to immerse patrons in a journey that transcends the ordinary. We worked closely with the client to capture the essence of their vision,

combining thoughtful design elements that enhance both the cuisine and atmosphere. The result? A space that feels like a mental getaway, transporting guests to a whole new world through its carefully curated environment.









Café Appetito Arabia

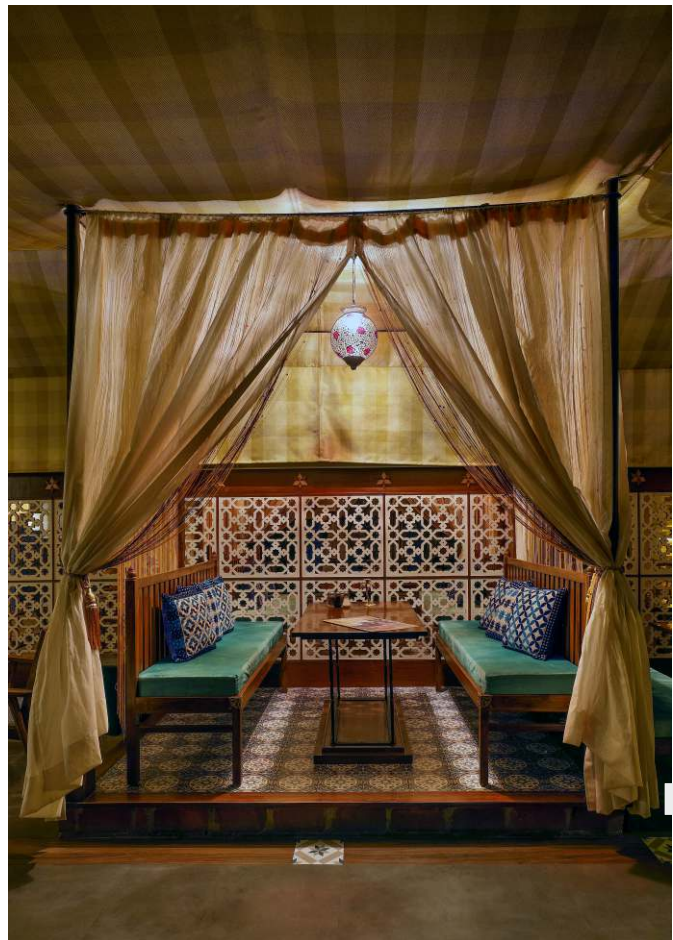
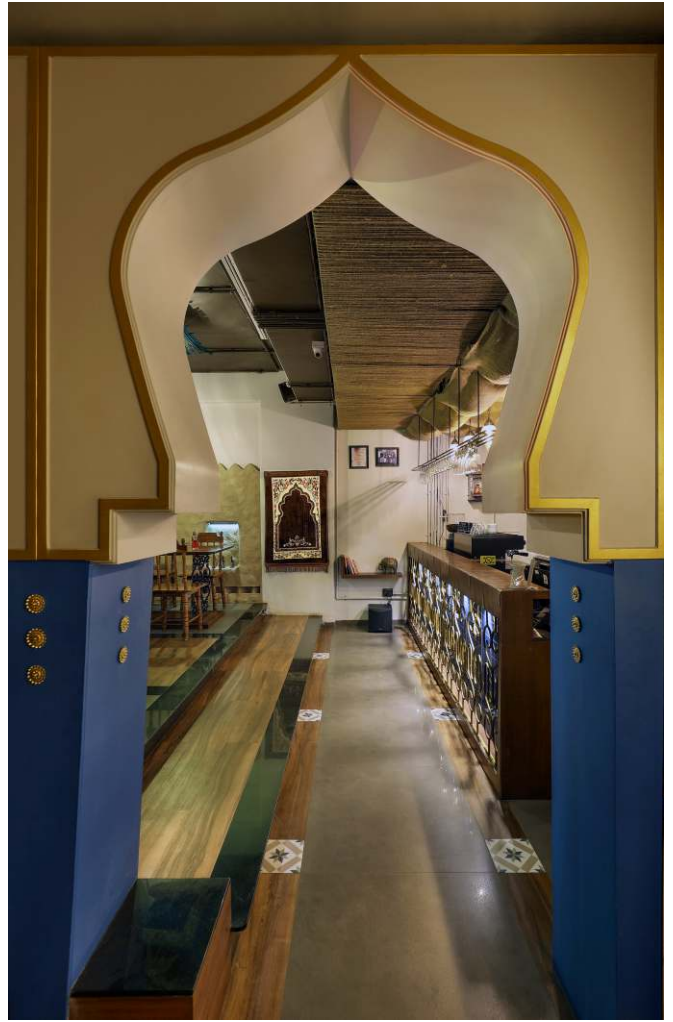
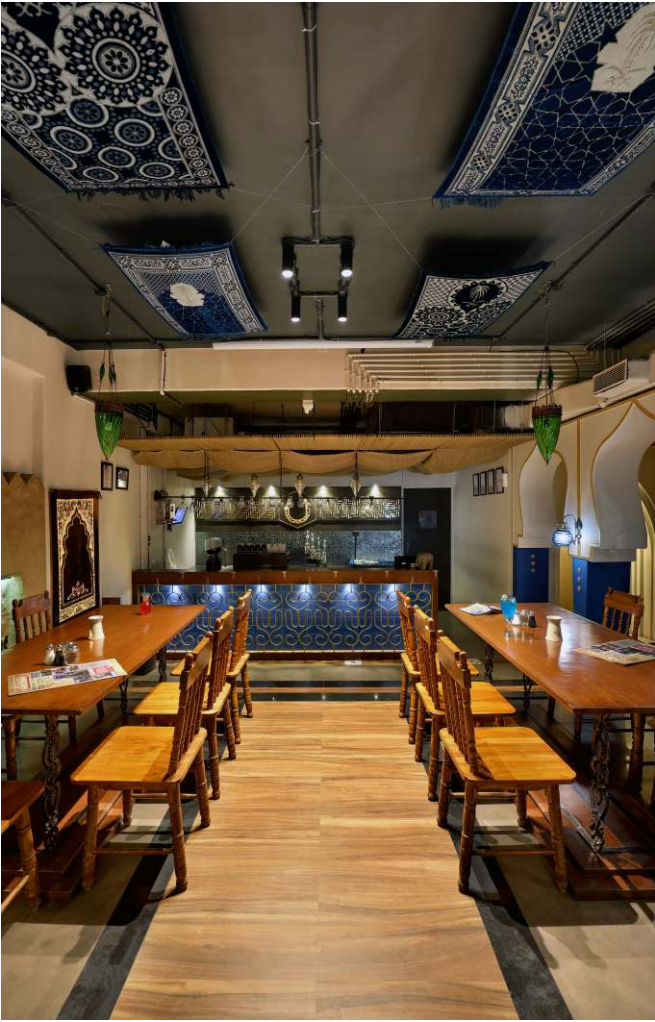
Type : F&B
Area : 1000 sq.ft.
Location : Vadodara



Appetito's new outlet called for a break from the usual, with an Arabian-inspired theme aimed at a youthful crowd. We embraced arched elements, vibrant colours, and traditional lighting to create a space that feels authentically exotic. Each seating area offers a unique

experience, while Turkish print carpets on the ceiling add a quirky, unexpected touch. The cherry on top? The beautifully crafted furniture details that tie everything into a sophisticated yet fun space.











Coffice, Makarpura

Type : F&B
Area : 1800 sq.ft.
Location : Vadodara

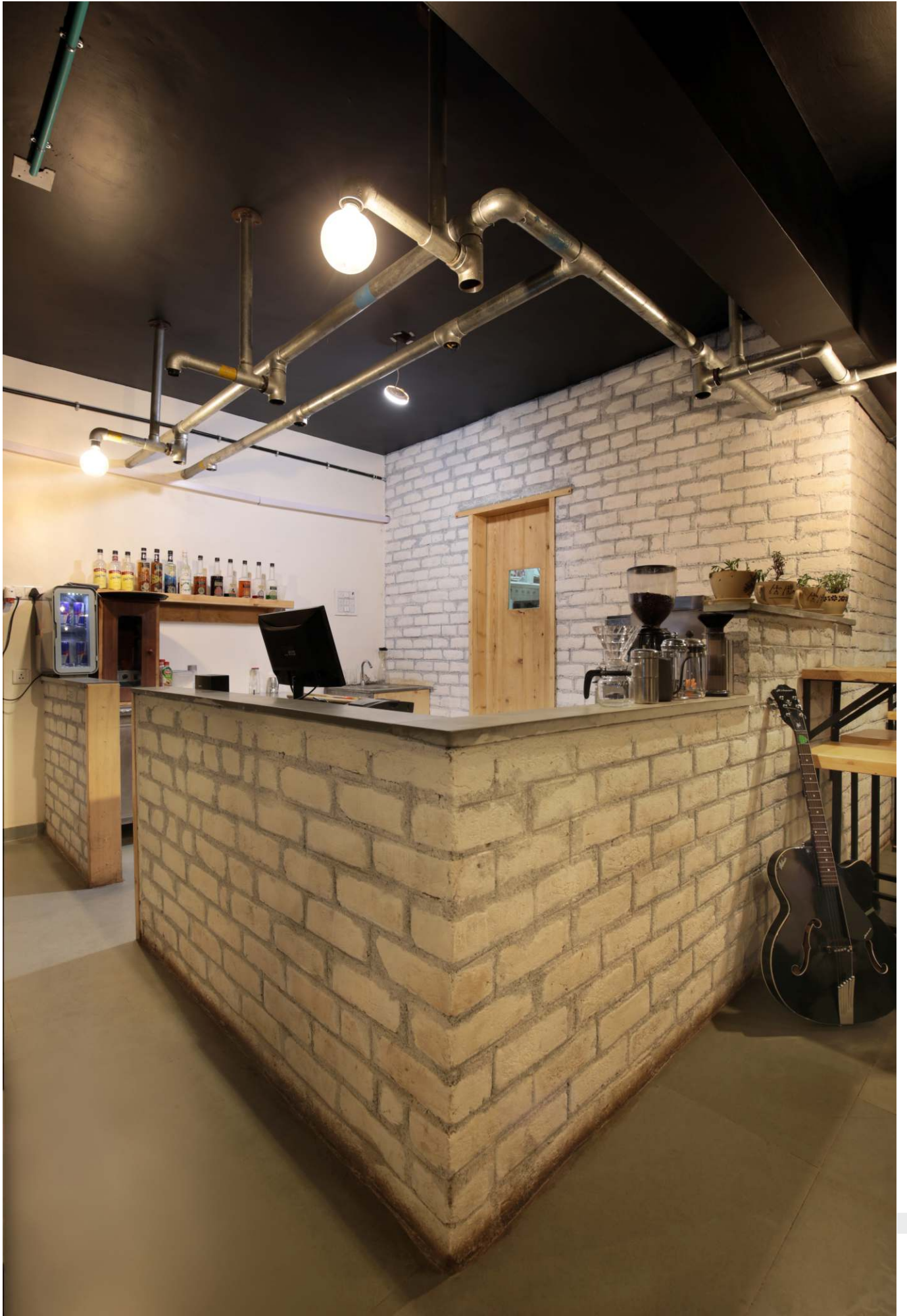


The Coffice co-working space is where productivity meets personality. With an industrial-chic vibe, it blends raw textures with smart, functional design to create a space that's both energizing and efficient. Whether you're brainstorming big ideas or tackling daily tasks, the atmosphere is just right, professional yet refreshingly fun.

A compact café keeps the caffeine flowing, while thoughtfully designed work zones ensure focus and flexibility. Every detail added to create a dynamic hub where great work happens, connections spark, and creativity thrives.







Brewbean's Cafe

Type : F&B
Area : 1000 sq.ft.
Location : Portblair



Brewbeans café was crafted to make time take a backseat to good vibes. Designed for long chats and even longer sips, this cozy café will wrap you in a warm hug the moment you step in. Plush nooks, soft lighting, and chairs

create the perfect backdrop for endless conversations and were thoughtfully included to make the customers stay more.





Brewberry's Nepal

Type : F&B
Area : 1800 sq.ft.
Location : Nepal



The Brewberry's Cafe, nestled in a bustling office complex, was designed to be a refreshing retreat for the working crowd. With the client's brief emphasizing simplicity and versatility, we created a space that seamlessly balanced form and function. Neutral tones set a calming foundation, while sleek display units adorned with planters and artifacts added subtle charm. Large windows forged a

strong inside-out connection, inviting natural light to enhance the chic, minimal interiors. In effect a café that offers a breather from deadlines was born as a refreshing, multi-functional haven for office-goers.



Curators Coffee

Type : F&B
Area : 1500 sq.ft.
Location : Vadodara

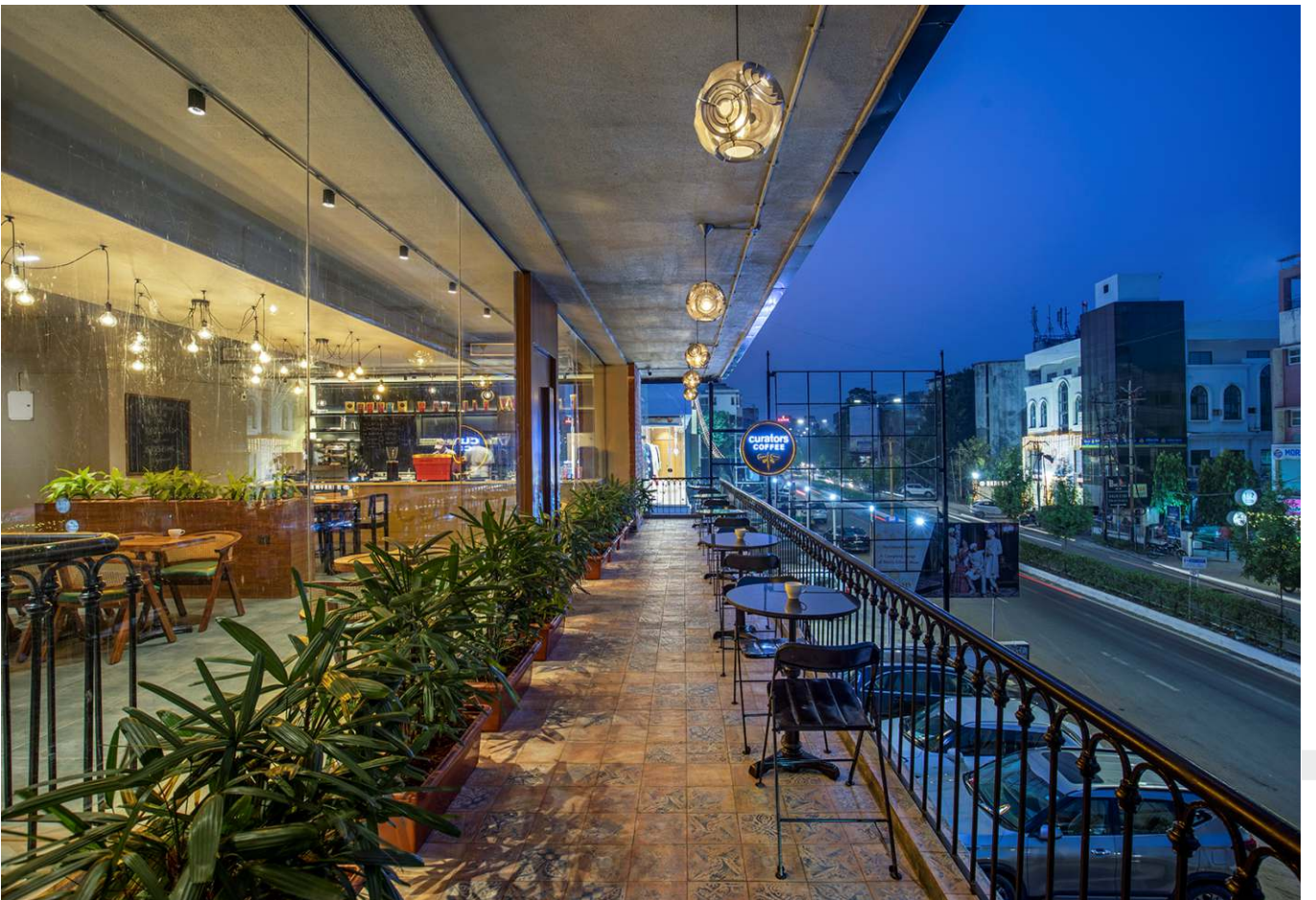


For this cafe, the client wanted to create a modern coffee place that feels both fresh and timeless, somewhere customers would want to linger with a warm cup in hand. So we played with raw, edgy elements like exposed brick and steel, paired with cozy, vintage touches for that warm,

“I could stay here forever” vibe. The idea was to create a space where the design is as inviting as the coffee, comfortable seating, soft lighting, and just the right amount of rustic charm.









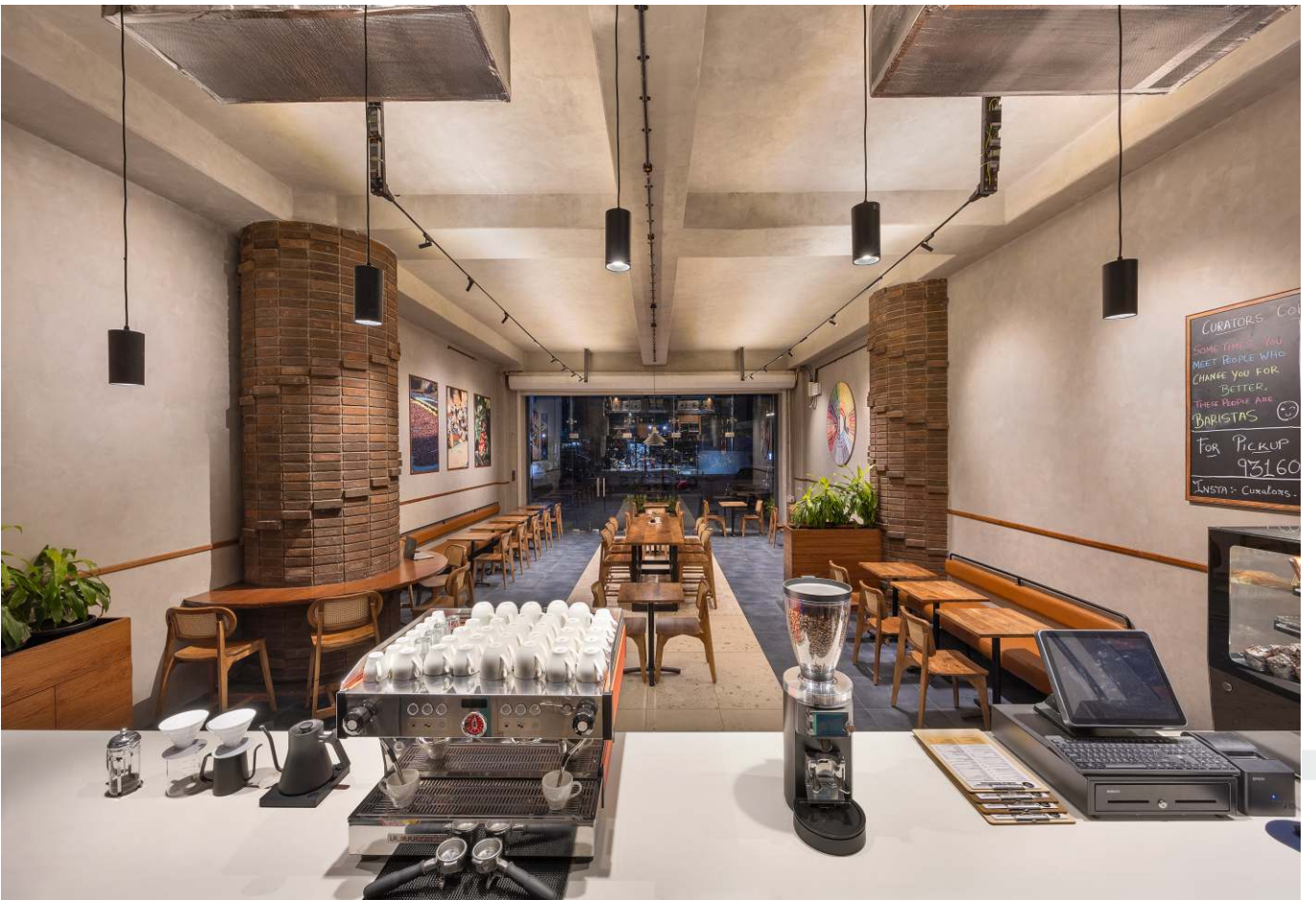
Curators Coffee Sarabhai

Type : F&B
Area : 1300 sq.ft.
Location : Vadodara



Every space tells a story. In designing this café, the goal was to craft an experience, one that feels effortlessly modern yet deeply familiar. This new location carries forward the same design philosophy as its predecessor, blending raw, industrial elements with warm, nostalgic

touches. It's an extension of a vision, one where thoughtful details, inviting textures, and a sense of belonging come together seamlessly. A space that invites people to slow down, savour the moment, and feel at home.





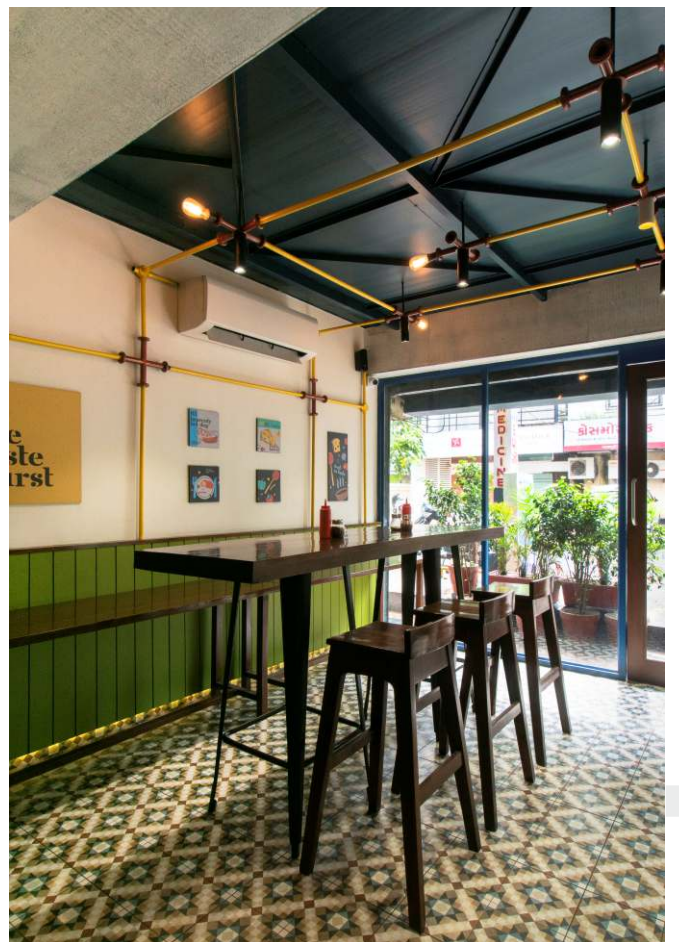
Yo Frankie

Type : F&B
Area : 900 sq.ft.
Location : Vadodara



For Yo Frankie's first outlet renovation, we blended the new logo's colours with a sleek interior update. A striking blue ceiling flows down the side walls, while a blue metal jaali door enhances the compact space. Monochrome terrazzo tiles cover the floor and counter, offering a clean, timeless

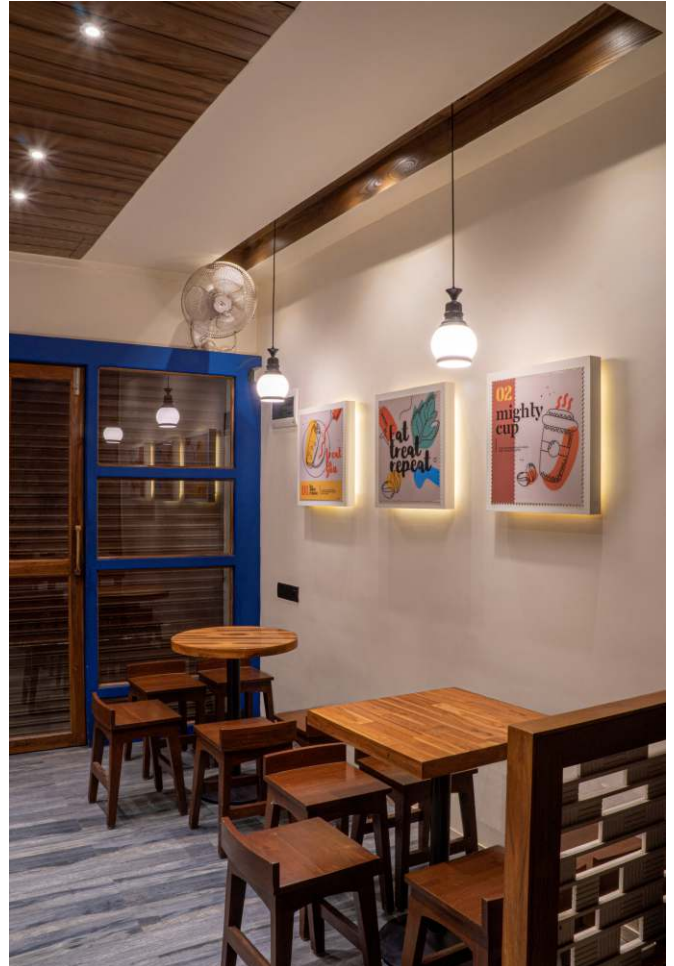
look. The open kitchen is highlighted with a small window, framed in wood, giving a peek into the action. A stylish, functional space that elevates the brand while keeping things fresh and modern.





YO Frankie

Type : F&B
Area : 700 sq.ft.
Location : Vidyanagar



Nestled on a busy street, this vibrant eatery offers a modern, eye-catching interior with a spacious kitchen and live mocktail counter. We split the space into three distinct areas: a lively entrance facing the street, a cozy spot near the counter, and a mezzanine for a more intimate vibe. The

entrance features a colourful metal ceiling with grid-style cylinder lights, while Moroccan tiles add charm to the floor. The counter combines sleek metal and wood, highlighted with LED lights, making it a striking focal point in the space.





Mr. Puff Kiosk

Type : F&B
Area : 80 sq.ft.
Location : Vadodara



Designing a compact kiosk meant making every inch count. Mr. Puff's new space balances efficiency with warmth, offering a bright and inviting setting for a quick bite or a relaxed pause. Wooden bench seating provides a

cozy spot to linger, while the smart layout keeps service smooth and hassle-free. Light hues and clever lighting create an airy feel, making the space feel bigger than it is. A kiosk that is a pocket of comfort, designed to delight.



Charge zone EV charging Station

Area : 100 sq.ft.
Location : Alibaug



This Charging Zone station is built for more than just powering up, it's designed for a seamless, comfortable experience. Smart, efficient, and thoughtfully planned, it ensures every EV owner gets a safe and hassle-free charge.

A shaded seating enclosure offers a relaxed space to wait, making the downtime feel effortless. With a focus on convenience and comfort, it's not just a stop, it's a recharge for both car and driver.

